

Table Golf Association
MEEPLE BEACH

THE 18 HOLE BOOKLET



2025 EDITION

Written and Illustrated by Gavin Garcia

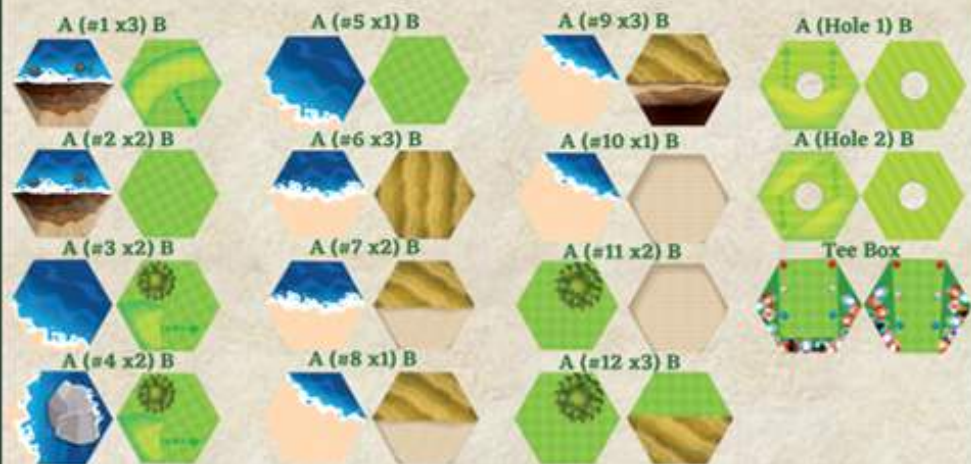


MEEPLE
MANIA GAMES

Welcome to Meeple Beach Island and all of its courses!
We hope you find our selection to be fun and challenging as you bring the holes to life on your table. All the courses in this book can be recreated using just the 28 tiles in TGA The Meeple Beach Edition.

As you flip through, you'll discover the island's most captivating holes. From Ocean hazards and Beach bunkers to slippery slopes and towering 3D Trees, this book showcases a variety of challenges that test the skills of even the most seasoned golfers.

To prepare for the upcoming courses, please arrange your tiles to avoid any overlap and misplacement during setup. Since the tiles do not have numbers, this is the most streamline way for players to match the displayed courses. The front side is the A-side, while the back is the B-side. Simply find the corresponding tiles and organize them as seen below with the A-side facing up.



1



7



13



2



8



14



3



9



15



4



10



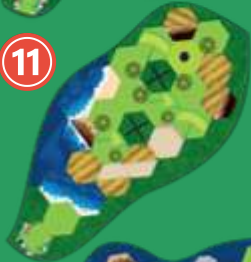
16



5



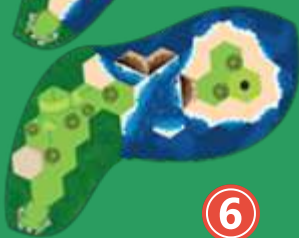
11



17



6



12



18



Dry Bend

The ideal landing area for this hole is a small area requiring a 7-tile shot but it sets the golfer up for a satisfying finish. Missing the drive means you'll be dealing with a lot of Dry Rough trouble.



1

Par 4



Ocean Bliss

For the risk-takers, this hole rarely shows mercy to those who dare to take the shot. Golfers might get lucky with a favorable bounce off some rocks, but otherwise, the left path offers a nice and safe alternative.



2
Par 3



Palm Swing

Since there is a missing tile from the center, the initial shot for this hole is critical. Depending on how the ball lands, golfers may want to risk going straight for the hole past the trees.



3

Par 4



Tree Trouble

For this hole, golfers are going to have to find an opening in the trees to reach the hole. Hitting the perfect distance may still leave the next shot difficult to pull off.



4

Par 4



Coral Peak

With 2 ways to approach the first shot, golfers are left with difficult choices all around. The water in the center of the course makes good distancing even more of a luxury than it already is.



5

Par 4



Meeple Island

Getting a shot at the classic tropical island is only half the battle in this course. Golfers need to make sure that they cover the watery gap that separates them from the green.



6

Par 5



Lucky Seven

Though it is one of the more forgiving holes at Meeple Beach, this course still has some tricks up its sleeve. Missing the hole or landing on the wrong ridge could take a ball into unlucky territory.



7
Par 3



Slippery Slope

Golfers will want to take extra care with where their ball lands on this course. One wrong move and your ball will be taken all the way back to the beginning, leaving all that hard work in vain.



8

Par 4



Sand Bars

For this course, there is not much room to deviate from the hole. Golfers will be lucky if their ball is still in play if they miss the hole-in-one. Rocks and Beach Sand may be your best friends here.



9

Par 3



Captain Hook

This wretched course will leave golfers wondering if picking up the sport was ever a good idea in the first place. With narrow shots and seemingly endless hazards, some may even want to call this a Par 6.



10
Par 5



The Holeway

This course is all about choosing. If you're accurate enough, you can shoot for the right. If you are fine with trees, the left may be for you. You can even dart across the narrow opening if you dare.



11
Par 4



Ocean Inlet

In this course, the small Fairway landing areas make it hard to avoid the Beach. So prepare to get your socks full of sand as you navigate the course. And try not to lose your ball at the inlet.



12
Par 4



Tropical Bend

In the real world, a golfer would try to shoot his drive across the wide ocean stretch to land on the green and make the hole. In the real world, the golfer would also just lose his ball.



13
Par 5



Lagoon Links

The lagoon in the center serves as a major obstacle to traverse, forcing the golfer to get creative with his approach to the hole. After crossing the water, be careful when going for the narrow hole.



14
Par 4



Snake-side Drive

This snaking course will have even the best golfers taking at least 4 shots on a good day. Thankfully, there aren't many difficult hazards in the way, and the landing areas are somewhat generous.



15
Par 5



Palm Paradox

Golfers will have a narrow shot at the hole if they risk an attempt to hit short and land on the close fairway. If not, Trees and Dry Rough will be waiting for their next victim. Pick your poison.



16
Par 4



Seagull Swing

In this course, the longest hitters will be able to reach the hole in 2. Hitting shorter than 7 tiles may result in trees blocking your view of the green. Steer clear of them and you'll be well on your way.



17
Par 4

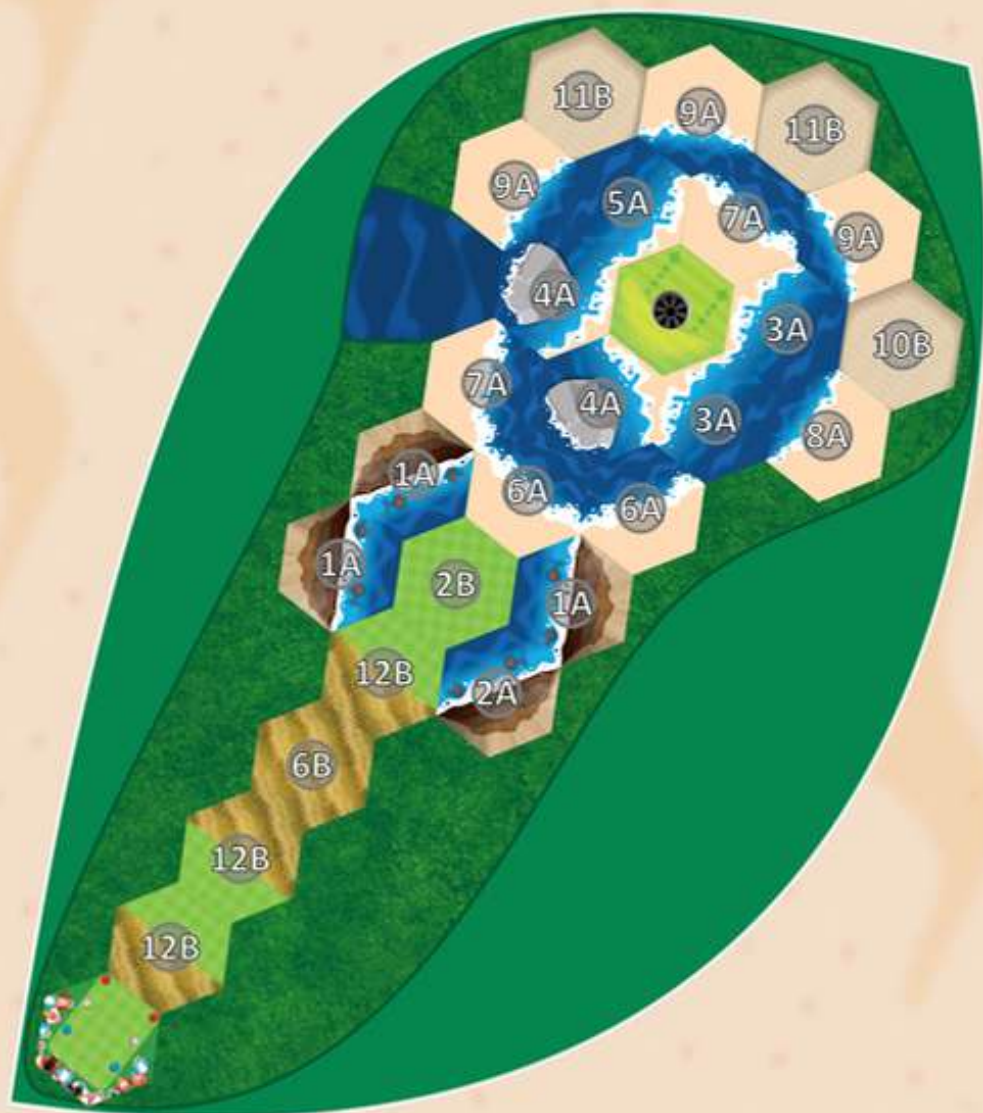


Trophy Green

After a long journey, Trophy Green is the ultimate finish to Meeple Beach. Though the hole is 8 tiles away on a par 3, the golfer has a chance to make a hole-in-one with the help of wind or a wayward rock.



18
Par 3



Congratulations, you made it to the end! We thank you for exploring our courses and hope you gained insights into what makes a great design so that you can start designing some of your own.

Which course was your favorite? We'd love to hear your feedback on our social media pages. Share your experiences, best scores, and thoughts on navigating the courses with us.

Think you have what it takes to compete? The Table Golf Association hosts tournaments at breweries and board game conventions throughout the year. Join us at big events such as DiceTower East, GenCon, QuestCon, and more for a chance to win prizes and earn the title of TGA Champion!

Stay connected and never miss an event by following us on social media @[TableGolfAssociation](https://www.instagram.com/TableGolfAssociation). We look forward to seeing you on the green!



Check out our Expansions!



FROZEN TUNDRA

SPICE UP YOUR COURSES WITH BRAND NEW TERRAIN TILES LIKE THE FROZEN LAKES AND 3D MOUNTAINS!



NEW TERRAINS
NEW GOLF PROS
3D MOUNTAINS

STADIUM COURSE

ENJOY 10 NEW THICKER AND GRIPPY TILES THAT SERVE AS A BORDER TO YOUR GOLF COURSES WHILE ADDING TO THE OVERALL AESTHETICS.



10 TILES
THICKER
NON-SLIP

SCAN



